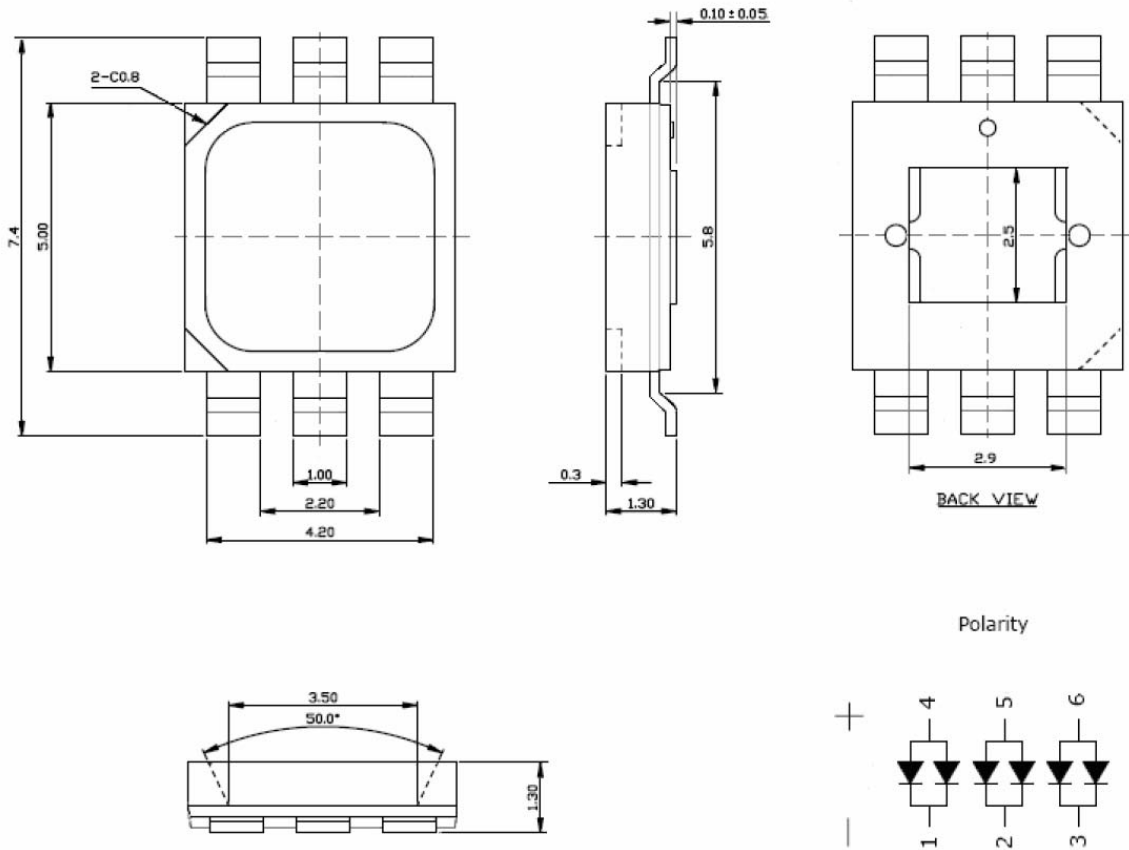


Technical Data Sheet -1W High Power LED with Reflector

★ Package Dimensions



NOTE:

- 1.All dimensions are in millimeter.
- 2.The tolerance is ± 0.1 mm.

★ Selection Guide

Part NO.	Chip		Lens Color	Viewing Angle 2θ 1/2(deg)
	Material	Emitted Color		
HP-210W-PW-RF	GaN	White	Water clear	120

Part No:HP-210W-PW-RF

★Absolute Maximum Ratings

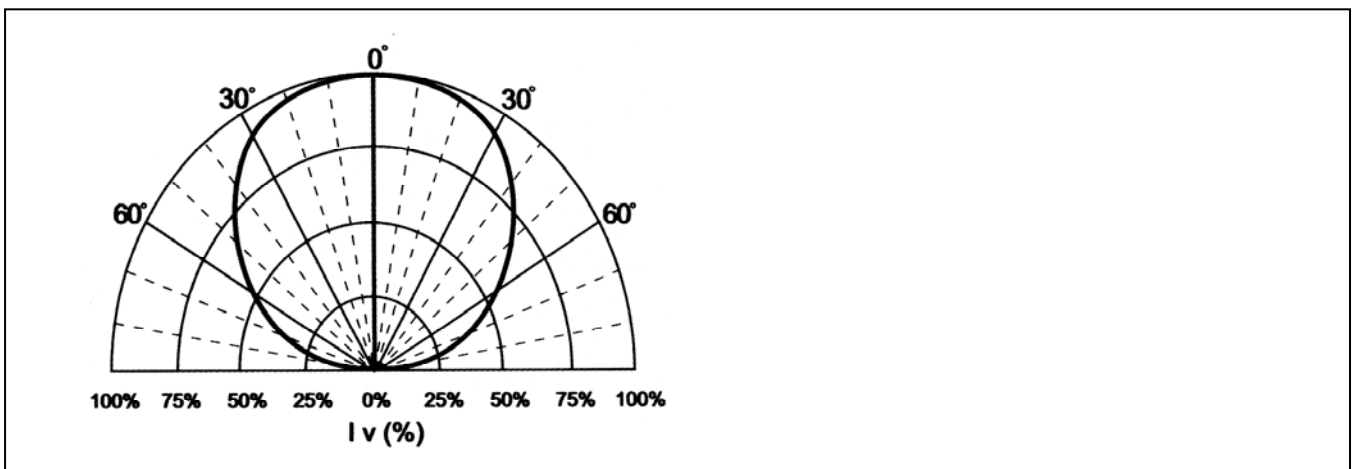
(Ta=25°C)

Parameter	Symbol	MAX. Rating	Unit
Reverse Current (VR=5V)	IR	50	uA
DC Forward Current	IF	240	mA
Peak Forward current	Ipeak	480	mA
LED Junction Temperature	TJ	120	°C
Operating Temperature	Topr	-40~+85	°C
Storage Temperature	Tsto	-40~+100	°C
Soldering Temperature MAX. 260°C for 5 sec MAX.			

★Electric-Optical Characteristics

Parameter	Symbol	Test Condition	MIN	TYP	MAX	Unit
Forward Voltage	VF	IF=210mA		3.4	3.8	V
Reverse Voltage	VR	IR=50uA	5			V
Luminous Flux	IV	IF=210mA	50	90		lm
Color temperature	CCT	IF=210mA		6500		K

★Beam Pattern

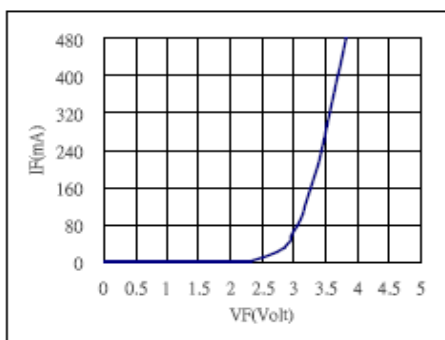


Part No:HP-210W-PW-RF

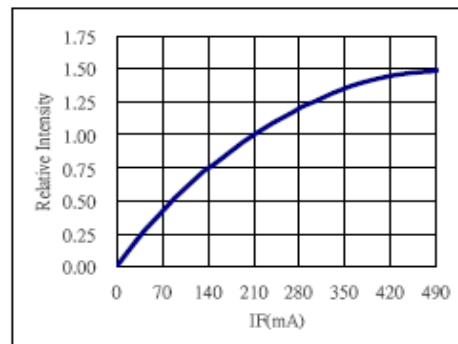
★ Typical Electrical / Optical Characteristics Curves

(25°C Ambient Temperature Unless Otherwise Noted)

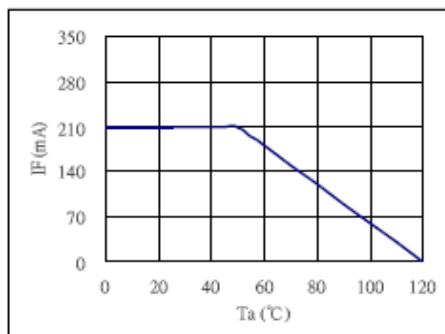
* Forward Voltage vs. Forward Current @25°C



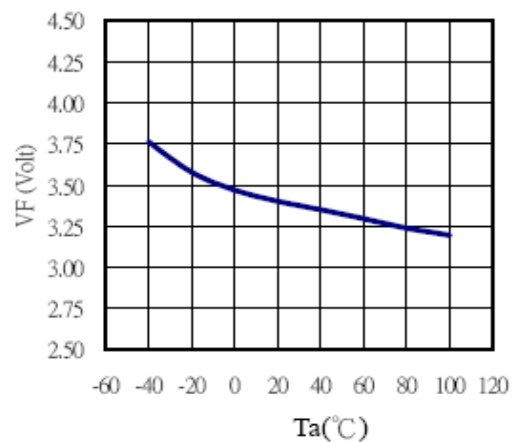
Forward Current vs. Relative Luminosity @25°C



* Ambient Temperature vs. Allowable Forward Current



* Ambient Temperature vs. Forward Voltage @210mA



Part No:HP-210W-PW-RF**★Reliability Test**

No	Item	Test Condition	Test Hours/Cycles	Samples Tested	Acc./Rej
1	Room Temperature DC Oper-ating Life	Ta=25°C, I _F = 210 mA	1000 Hrs	10	0/1
2	Thermal Shock	0°C (2min)→ 100°C (2min)	100 Cycles	10	0/1
3	Temperature Cycle	-40°C (30min) →(5min)→+100 °C (30min)	100 Cycles	10	0/1
4	High Temp./ High Humi. Test	85°C/85%RH	500 Hrs	10	0/1
5	High Temperature Storage	Ta=100°C	1000 Hrs	10	0/1
6	Low Temperature Storage	Ta= - 40°C	1000 Hrs	10	0/1
7	Soldering Heat	260°C±5°C	5 Seconds	10	0/1